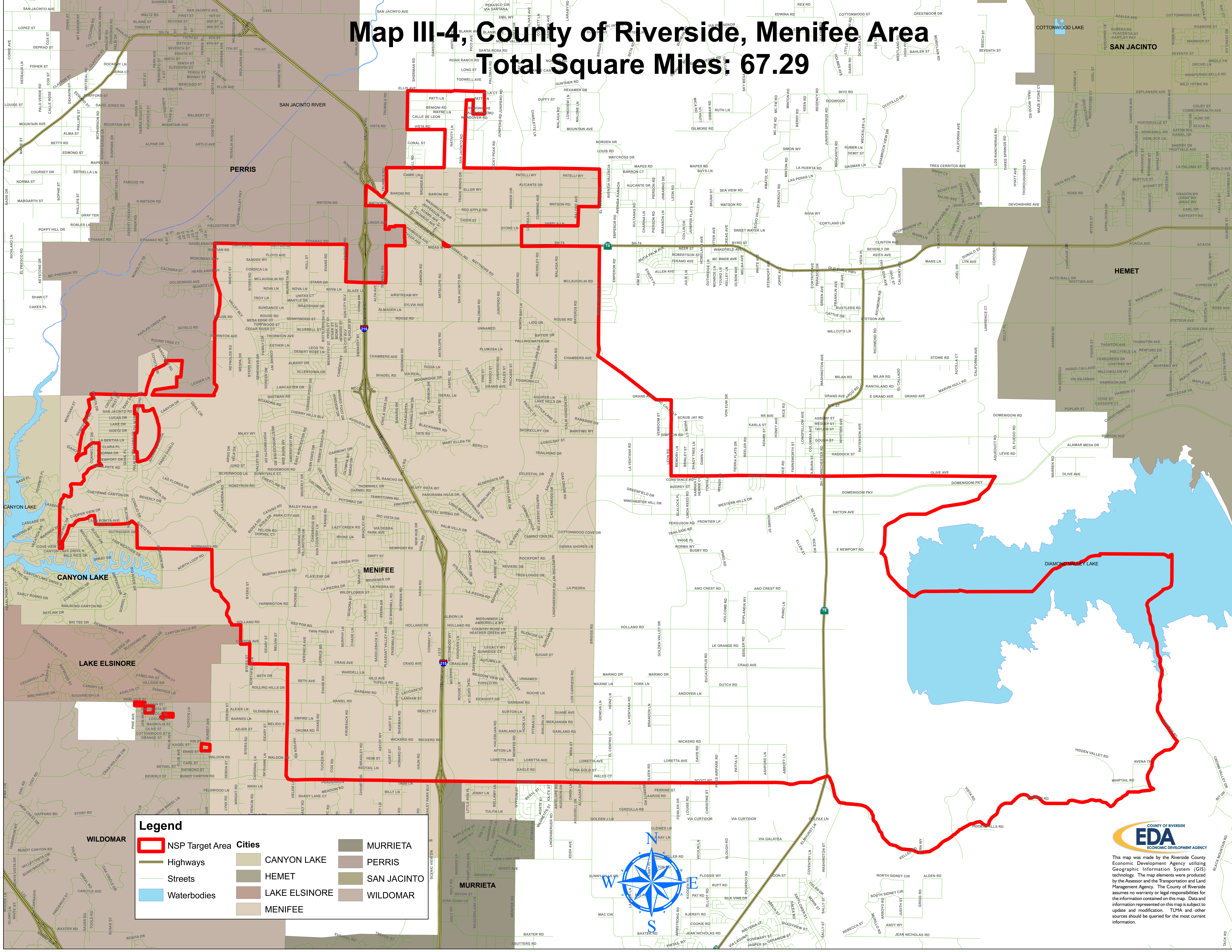


Map II-4, County of Riverside, Menifee Area

Total Square Miles: 67.29

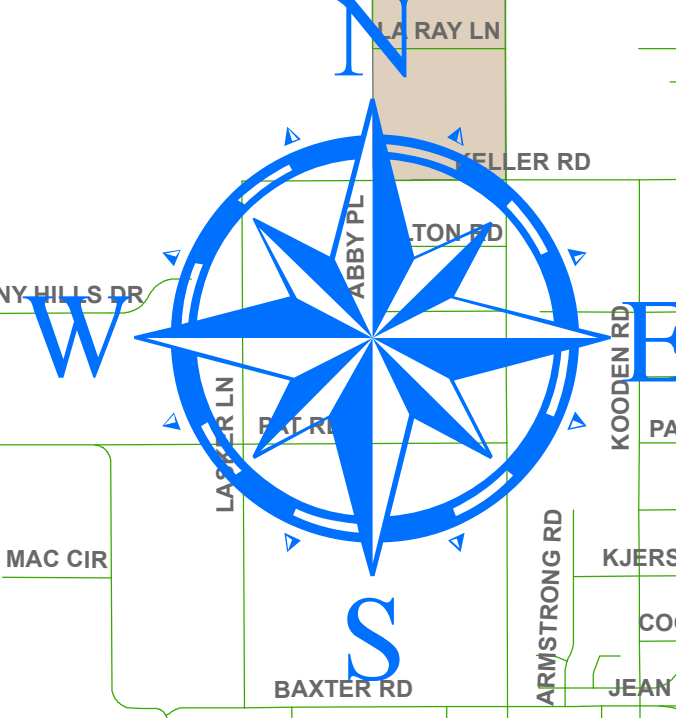


Legend

- NSP Target Area
- Highways
- Streets
- Waterbodies

Cities

- MURRIETA
- PERRIS
- SAN JACINTO
- WILDOMAR
- CANYON LAKE
- HEMET
- LAKE ELSINORE
- MENIFEE



COUNTY OF RIVERSIDE
EDA
 ECONOMIC DEVELOPMENT AGENCY

This map was made by the Riverside County Economic Development Agency utilizing Geographic Information System (GIS) technology. The map elements were produced by the Assessor and the Transportation and Land Management Agency. The County of Riverside assumes no warranty or legal responsibilities for the information contained on this map. Data and information represented on this map is subject to update and modification. TPLMA and other sources should be queried for the most current information.