



**HWS** HOUSING AND  
WORKFORCE  
SOLUTIONS  
ENGAGE. ENCOURAGE. EQUIP.

**2023**  
Riverside County  
Continuum of Care

# HOMELESS POINT-IN-TIME COUNT Summary

*The federally mandated count of people experiencing sheltered and unsheltered homelessness on a single night was conducted January 25, 2023. The data collected is used to demonstrate the need for services, resource planning, and to inform the community about homelessness.*

*More than a Count*



# 2023 POINT-IN-TIME COUNT

**3,725** total

12% Increase from 3,316 (2022 PIT Count)

Unsheltered **2,441**

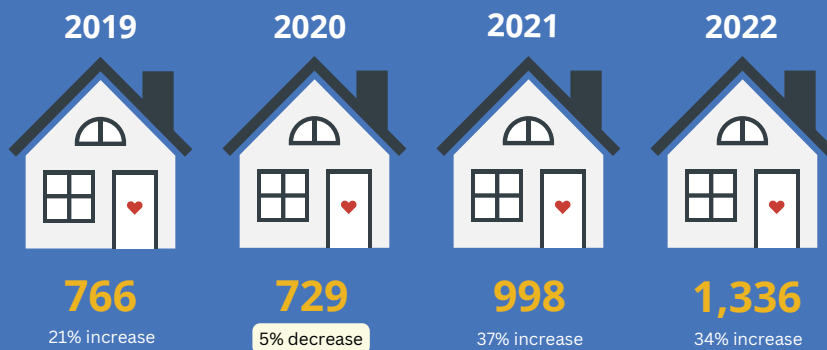
23% Increase from 1,980 (2022 PIT Count)

Sheltered **1,284**

4% decrease from 1,336 (2022 PIT Count)

## Sheltered Annual Totals

and % change from previous year



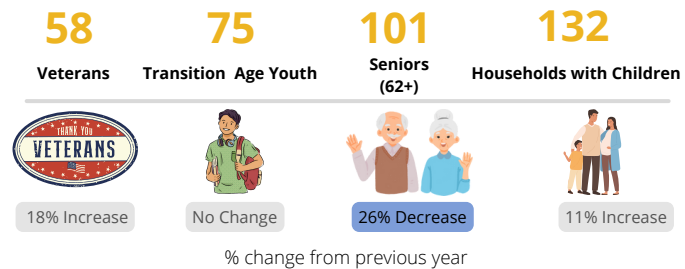
## 1,284 Sheltered Total

By Supervisory

District

District 1	396
District 2	112
District 3	206
District 4	406
District 5	164

### Subpopulation



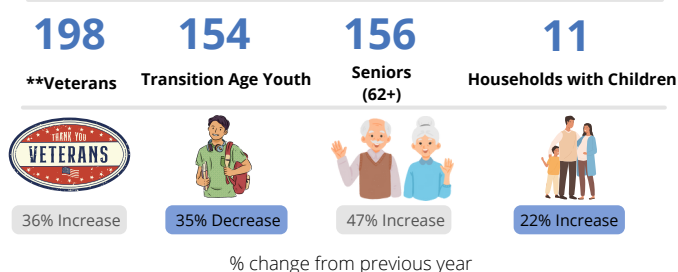
## 2,441 Unsheltered Total

By Supervisory

District

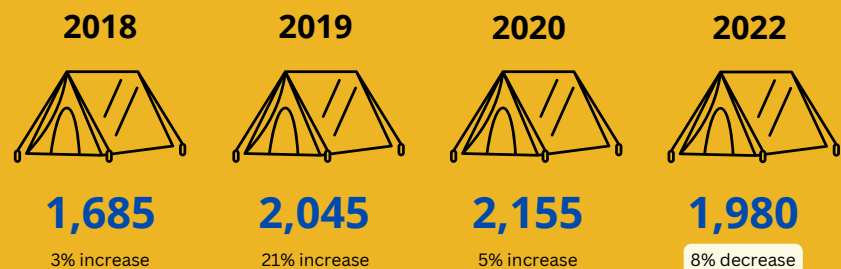
District 1	742
District 2	260
District 3	131
District 4	755
District 5	553

### Subpopulation



## Unsheltered Annual Totals

and % change from previous year



\*2021 Unsheltered PIT Count was not conducted as a result of COVID exemption

\*\* number reported is extrapolated, total unsheltered interviewed veterans is 100 (30% increase from 2022)

# SUB-POPULATION TOTALS



**256**  
Veterans

31% Increase



**143**  
Households  
with Children

12% Increase



**229** Transition  
Age Youth (18-24)

27% Decrease



**257**  
Seniors 62+

6% Increase

**21%**

Unsheltered  
Persons  
Experiencing First  
Time Homelessness

## Top 3 *Primary* Factors

Contributing to Unsheltered Homelessness Reported

- 1.** Family Disruption 27%
- 2.** Lack of Income 19%
- 3.** Unemployment 12%

## *MORE THAN A COUNT* INITIATIVE



32% of surveyed  
individuals requested  
post-count services



784 individuals referred to  
services



Top 3 requested services

- 1.** Housing Services
- 2.** CalFresh & Cashaid
- 3.** Food Pantries

*Unsheltered Interviewed Only*

# District and City Breakdown

\*Data displayed is based on newly adopted district boundaries



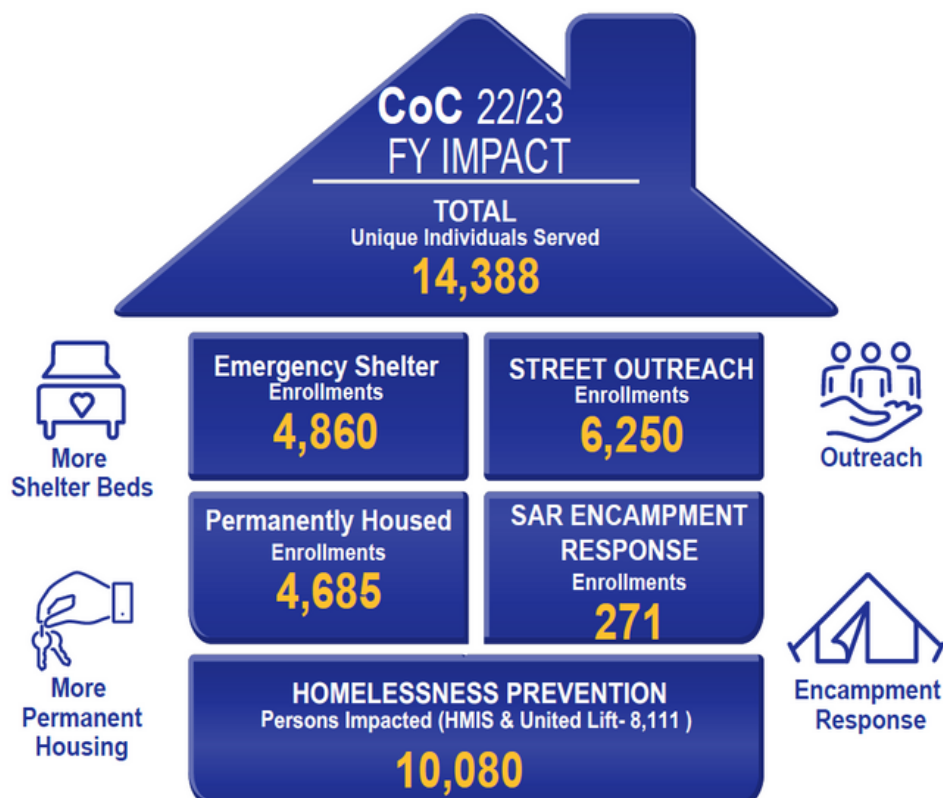
District 1			
	Unsheltered 2023	Sheltered 2023	Total
Perris	90	24	114
Riverside	605	372	977
Wildomar	10	36	46
Unincorporated	47	0	47
Total	752	432	1184
District 2			
	Unsheltered 2023	Sheltered 2023	Total
Canyon Lake	0	0	0
Corona	65	50	115
Eastvale	7	18	25
Jurupa Valley**	79	3	82
Norco	13	9	22
Lake Elsinore	78	32	110
Unincorporated	18	0	18
Total	260	112	372
District 3			
	Unsheltered 2023	Sheltered 2023	Total
Menifee	25	0	25
Murrieta	33	132	165
Temecula	35	38	73
Unincorporated	28	0	28
Total	121	170	291
District 4			
	Unsheltered 2023	Sheltered 2023	Total
Blythe	105	7	112
Cathedral City	40	5	45
Coachella	67	7	74
Desert Hot Springs	107	15	122
Indian Wells	0	0	0
Indio	108	319	427
La Quinta	4	0	4
Palm Desert	39	0	39
Palm Springs	239	29	268
Rancho Mirage	3	0	3
Unincorporated	43	24	67
Total	755	406	1161
District 5			
	Unsheltered 2023	Sheltered 2023	Total
Banning	40	50	90
Beaumont	33	0	33
Calimesa	8	0	8
Hemet	207	66	273
Moreno Valley	77	24	101
San Jacinto	120	24	144
Unincorporated	68	0	68
Total	553	164	717

\*\*New districting places Jurupa Valley in D1 & D2. Jurupa Valley will be split between D1 and D2 in 2025 following 2023-2025 transition period.

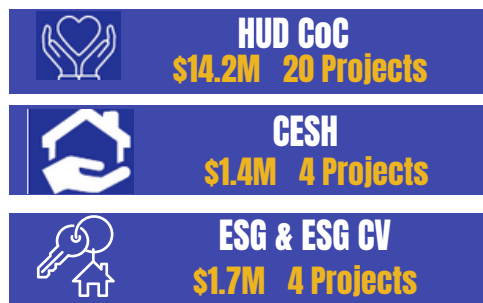


# IMPACT REPORT

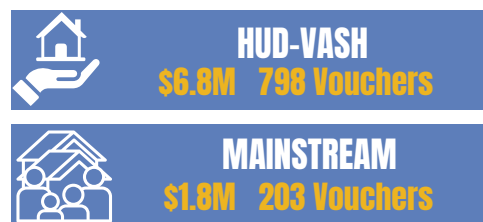
FY 2022/2023



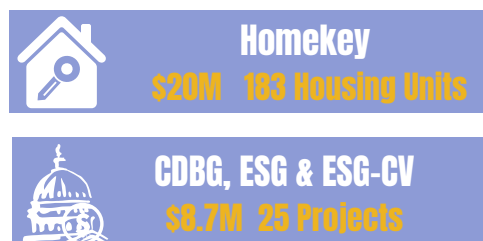
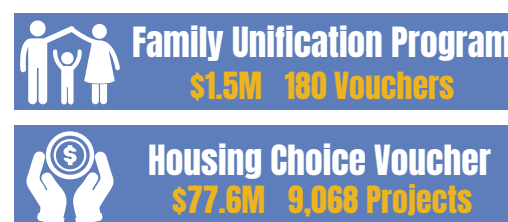
## HOMELESS FUNDING & PROGRAMS FOR RIVERSIDE COUNTY



**CONTINUUM OF CARE**  
TOTAL \$62M



**HOUSING AUTHORITY**  
TOTAL \$87.7M



**HOUSING & COMMUNITY  
DEVELOPMENT**  
TOTAL \$320.7

